

IN BUSINESS SINCE YEAR 1981



POWER LINKER

Group of Companies



Wisdom is not Virtue but Necessity

www.powerlinker.org



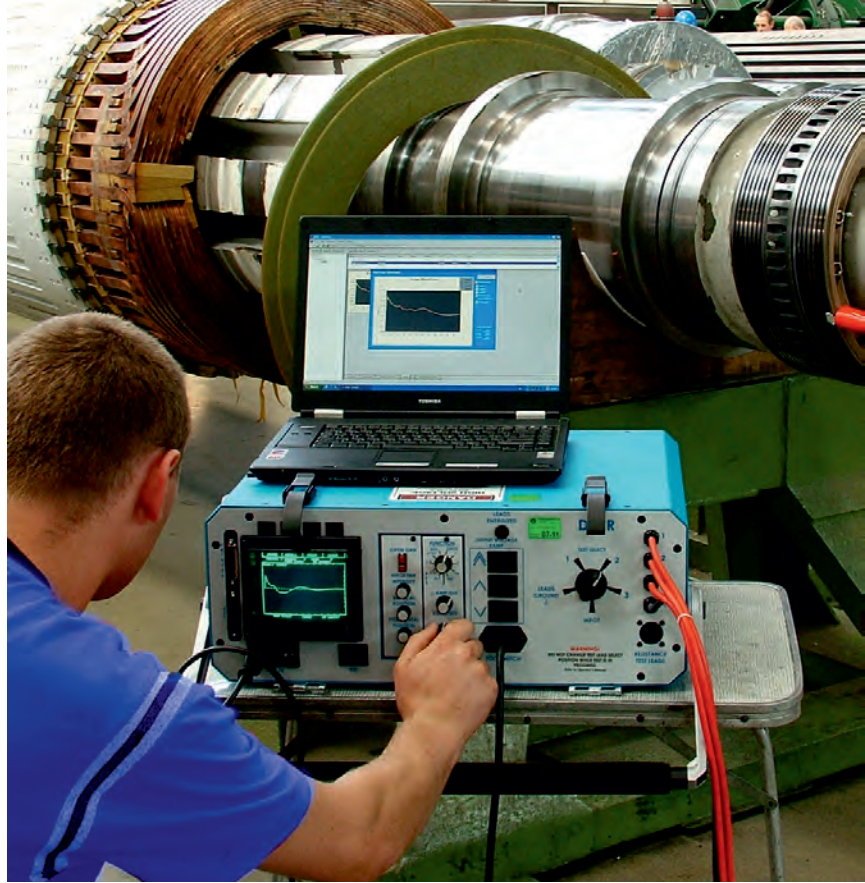
POWER LINKER GROUP OF COMPANIES

The Company

Established in 1981 by an elite team of engineers breaking frontiers in the field of engineering at Tata Consulting Engineers, Mumbai, some of whom have even published papers in International and National Journals. This dynamic enterprise with core competencies in Electrical Design began operations with Testing & Commissioning of major and complex Electrical Systems with specific expertise in areas of Power System Protection, where the jobs of Relay Testing were carried out.

The organization currently executes major Design Engineering, Power System Study, Testing Commissioning, Condition Monitoring and Diagnostic Testing projects comprising EHV / HV Switchyards upto 400 kV, Power Transformers, Power Plants (Coal, Gas, Liquid Fuel based) Electrical System. MV / LV switchgear, Microprocessor or Numerical based protection relays.

With long experience in above field, organization conducts 'Power Engineering courses on very important and relevant topics of Electrical Engineering.



Key Persons

Who are operating the business and holding post graduate qualification in the field of Electrical Engineering are,



Mr. H. C. Mehta (Since 1972)
M. Tech (IIT-B), FIE,
Chartered Engineer, DBM.



Mr. Jay Mehta (Since 2004)
M. Tech (VJTI, Mumbai).

Services Offered

Power System Studies

Power System studies on IEEE certified Engineering Software ETAP and EMTDC Studies on PSCAD Software

Power Engineering Courses

Power Engineering Courses Conducted on Subject of Electrical Equipment protection, Power system studies etc.

Condition Monitoring and Diagnostic Testing

For Generators, Power Transformers, M.V. Motors, H.V. Cables, CT's, PT's, LA's with state of art computerized test equipments.

Electrical System Testing commissioning

Testing - commissioning of Power Plant Electrical System. Generators, Power Transformers, EHV/HV Switchyard's Protection Systems on a software operated, state of art Test System

Project, Electrical System Design Engineering

Power Quality Assessment

Business Activities:

- Electrical System Design Engineering.
- Power System Studies on ETAP Software.
- EMTDC (Electromagnetic Transient DC Simulation) Studies on PSCAD Software.
- Electrical System Testing & Commissioning from 400 kV to 415 V.
This includes, Thermal, Gas or DG based Power Plants Electrical System.
- Condition Monitoring & Diagnostic Testing (Health Check, Asset Management) of Major Power equipments.
- Power Quality Assessment.
- Power Engineering Courses.

Above are unique and RARE combination of services being provided by one organization. This helps, plant, project to achieve the operational reliability.

Professional Engineering Software's

We are holding licenses for following Commercial Engineering software.



Thinking Power at
your Fingertips®

ETAP

Electrical Transient Analysis - 5 Licences

The Power System studies are carried out on Power System Simulation Software like ETAP.



PSCAD

Power System Computer Aided Design

PSCAD is the professional simulation tool for analyzing variety of power systems transients and Insulation co-ordination

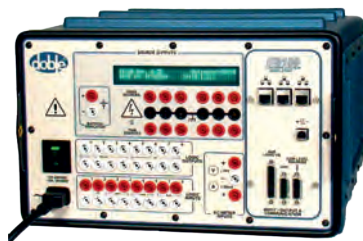
Instruments for Testing & Commissioning Services

We have multiple Sets of world class Software operated testing instruments owned by us with equal number of accessories.



ISA T3000

Digital Substation Test Set
with accessories



Doble F6150

3 Phase Digital Power System
Simulators with accessories



Fluke 435-II

3 Phase Power Quality
Analyzer

Instruments for **Conditioning Monitoring & Diagnostic Testing**

For these business vertical also there are independent multiple sets of world class software operated testing instrument owned by us, with multiple accessories.



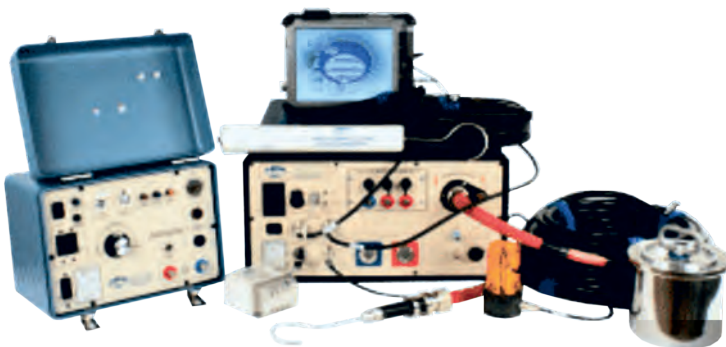
Baur Viola

Power Cable VLF Test Kit



Doble M5200

Transformer Sweep Frequency Response Analyser (SFRA)



Doble M4100

Automatic Insulation Analyzer. Turns ratio meter
Impedance measurement



Phenix 650-2P

AC High Voltage Test Kit and
Accessories for PD measurement



VBT 75P

Circuit Breaker Vacuum Bottle Tester



TDR 100

Generator Rotor RSO Test Kit



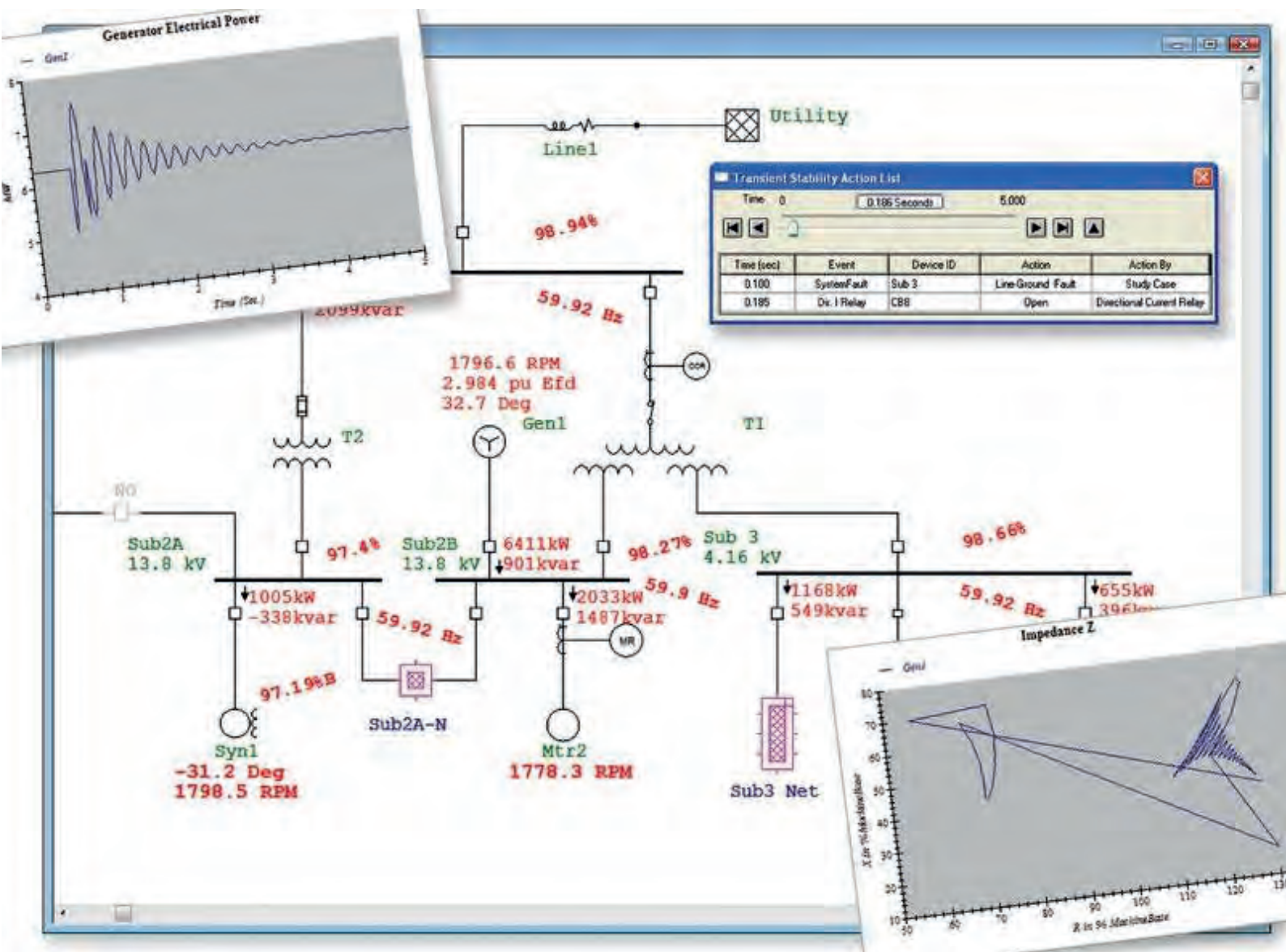
ISA SCAR 10

Lightning Arrestor test kit

India Operations:

Power Linker's reputation for quality engineering output along with its specialized expertise in high-tech areas of Electrical Design has helped create a diverse customer base comprising of leading Industrial plants in Indian corporate sectors such as:

- ⚡ Fertilizer
- ⚡ Petrochemicals, Refinery
- ⚡ Oil, Gas, LNG
- ⚡ Power Generation
- ⚡ Steel Plants
- ⚡ Copper and Aluminium Smelters
- ⚡ Cement Plants



Typical Indian Clients:

⚡ Oil and Gas Industries



⚡ Cement Plants



⚡ Steel / Aluminium / Copper Smelters



⚡ Chemical and Fertilizer Industries



⚡ Textile and Paper Mills



⚡ Other Industries



⚡ Power Plants

International Operations:

From year 1994, Power Linker Group expanded their services in international arena.

By now Group has worked in following countries,



Gulf Region

- ⚡ Kuwait
- ⚡ Oman
- ⚡ Bahrain
- ⚡ Saudi Arabia
- ⚡ UAE

Africa Region

- ⚡ Democratic Republic of Congo

Far East

- ⚡ FIJI Islands,
- ⚡ Malaysia
- ⚡ Indonesia



International Clients:

⚡ Kuwait



⚡ Bahrain



⚡ GCC Countries



⚡ Indonesia



⚡ Malaysia



⚡ Oman



⚡ Democratic Republic Of Congo



⚡ Fiji Island





Times Square Office Building

Organization **Structure** & Office Set Up

- ⚡ Conceived in 1981 by an elite team of engineers from Tata Consulting Engineers, Mumbai.
- ⚡ All the operations of Power Linker Group are centralized at Mumbai India office, whereas the project groups are spread at various client's premises.
- ⚡ Design Engineering & Commercial office is at "Times Square" Andheri (East) Mumbai. This is a prime business island in one of the busiest commercial area in Mumbai.
- ⚡ The office is spread across an area of 8100 sq. ft. The office is well equipped with all modern amenities, softwares, analytical tools and is manned by staff strength of app 55 Nos.

Attrium View



Power Linker Office





Reception Area



Data bank & Library Area



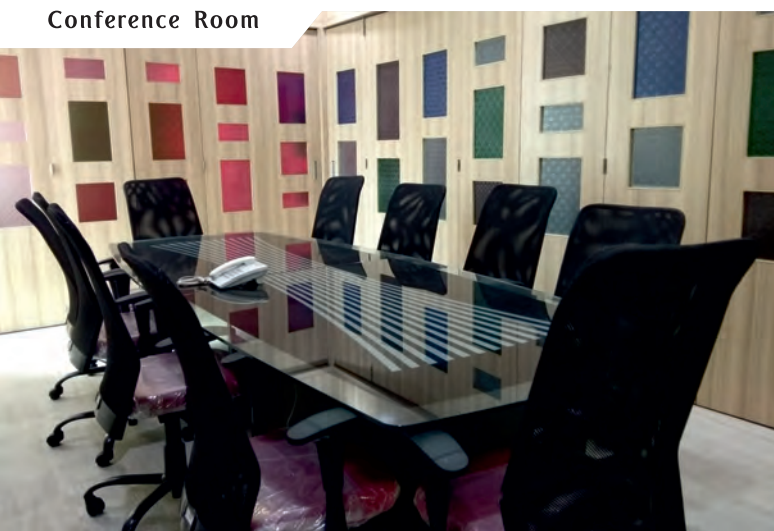
Meeting Room

Business is organized and conducted in verticals off,

- ⚡ Design Engineering & Power System Studies Group.
- ⚡ Testing and Commissioning Group.
- ⚡ Condition Monitoring & Diagnostic Group.
- ⚡ Conducting Power Engineering Courses.
- ⚡ Support Group consisting of HR, Administration, Accounts & Finance Group.



Staff Area (Engineering)



Conference Room



Class Room: Spiritual + Training

Code of **Ethics**

The staff members, in recognition of the importance of technologies in improving the quality of life throughout the world, and in accepting a personal obligation to our profession, its members and the communities hereby commit themselves to the highest ethical and professional conduct.



For more information, contact us:



Power Linker Group of Companies

Engineering Office :

📍 Times Square, 602B, B Wing,
Near Marol Metro Station,
Andheri (E), Mumbai 400 059,
India

☎ +91 98 201 30405
+91 98 196 34440
✉ hcmehta@powerlinker.org
🌐 www.powerlinker.org